

**Jabra**<sup>®</sup>  
YOU'RE ON

# JABRA MINI



User Manual

[jabra.com/mini](http://jabra.com/mini)

A BRAND BY

 GN Netcom

---

© 2013 GN Netcom A/S. All rights reserved. Jabra® is a registered trademark of GN Netcom A/S. All other trademarks included herein are the property of their respective owners. The Bluetooth® word mark and logos are owned by the Bluetooth SIG, Inc. and any use of such marks by GN Netcom A/S is under license. (Design and specifications subject to change without notice).

---

MADE IN CHINA  
MODEL: OTE15



---

**Declaration of Conformity** can be found on  
[www.jabra.com/CP/US/declarations-of-conformity](http://www.jabra.com/CP/US/declarations-of-conformity)

# CONTENTS

1. WELCOME .....	4
2. HEADSET OVERVIEW .....	5
3. HOW TO WEAR .....	6
3.1 CHANGE EARGELS	
3.2 ATTACHING THE EARHOOK	
4. HOW TO CHARGE THE BATTERY.....	8
4.1 USB CHARGING	
4.2 CAR CHARGING	
5 HOW TO CONNECT.....	9
6. HOW TO USE .....	10
6.1 MULTIPLE CALL HANDLING	
6.2 LIST OF VOICE GUIDANCE	
7. SOFTWARE .....	14
7.1 JABRA ASSIST	
8. SUPPORT .....	15
8.1 FAQ	
8.2 HOW TO CARE FOR YOUR HEADSET	
9. TECHNICAL SPECIFICATIONS .....	17

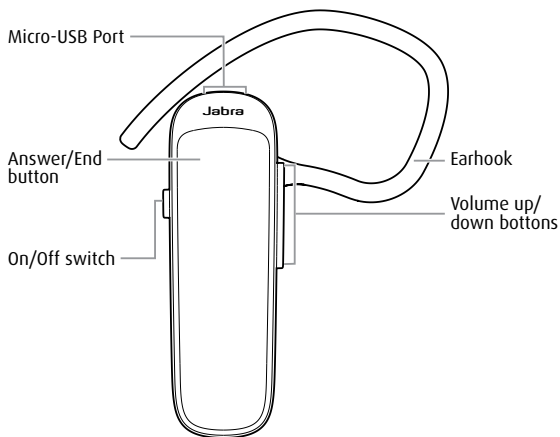
# 1. WELCOME

Thank you for using the Jabra Mini. We hope you will enjoy it!

## **JABRA MINI FEATURES**

- Voice guidance
- Battery and pairing status display
- HD voice
- Long talk time - Up to 9 hours
- Power Nap feature
- New comfort pack
- Wireless freedom - Up to 30m/98ft

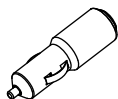
## 2. HEADSET OVERVIEW



Small earhook



Large earhook



Car charger



Eargel



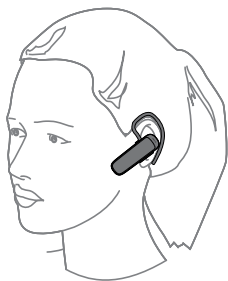
Looped eargel



USB cable

### 3. HOW TO WEAR

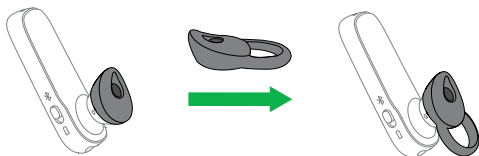
The headset can be worn on the left or right ear.



### 3.1 CHANGE EARGELS

---

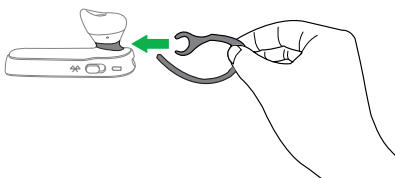
Choose between 2 ergo-designed eargels for optimal fit and comfort.



### 3.2 ATTACHING THE EARHOOK

---

The earhook can be attached to the headset for a more secure fit, and can be worn with or without the eargel.

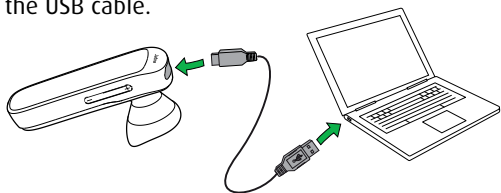


## 4. HOW TO CHARGE THE BATTERY

### 4.1 USB CHARGING

---

Plug the headset into any available USB port using the USB cable.

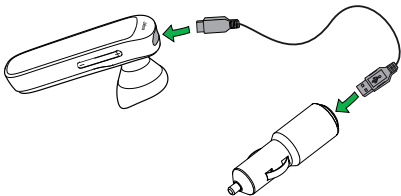


It takes approx. 2 hours to fully charge the headset.

### 4.2 CAR CHARGING

---

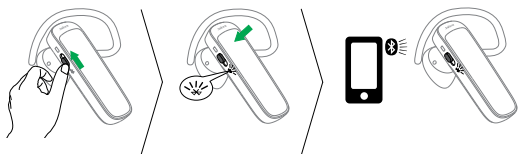
Connect the USB cable to the car charger, and plug the headset into the car's power supply using the car charger.



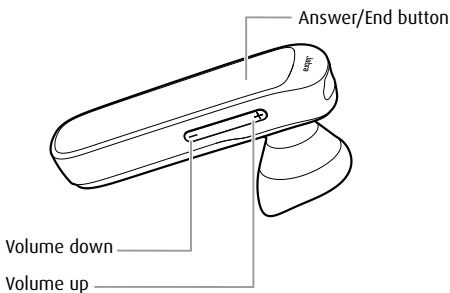
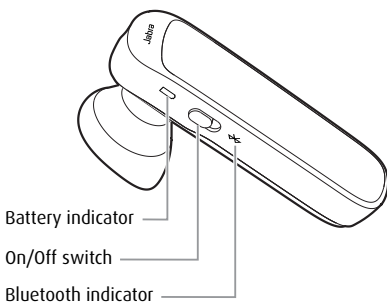


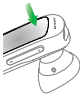
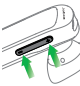
## 5. HOW TO CONNECT

1. Turn the headset on (set the **On/Off** switch to the On position).
2. Press and hold (3 secs) the **Answer/end** button until the Bluetooth indicator flashes blue, and pairing mode is announced in the headset.
3. Follow the voice-guided pairing instructions to pair to your Bluetooth device.



## 6. HOW TO USE

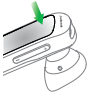


FUNCTION	ACTION
	Answer call
	Tap the <b>Answer/end</b> button
	End call
	Tap the <b>Answer/end</b> button
	Activate voice dialing (phone dependent)
	Press and hold (2 secs) the <b>Answer/end</b> button when not on a call
	Reject call
	Double-tap the <b>Answer/end</b> button
	Redial last number
	Double-tap the <b>Answer/end</b> button when not on a call
	Adjust speaker volume
	Tap the <b>Volume up</b> or <b>Volume down</b> button
	Mute/un-mute microphone
	Tap both the <b>Volume up</b> and <b>Volume down</b> to mute/un-mute.

## 6.1 MULTIPLE CALL HANDLING

---

The headset can accept and handle multiple calls simultaneously.

	FUNCTION	ACTION
	End current call and answer incoming call	Tap the <b>Answer/end</b> button
	Switch between held call and active call	Press and hold (2 secs) the <b>Answer/end</b> button
	Put current call on hold and answer incoming call	Press and hold (2 secs) the <b>Answer/end</b> button
	Reject incoming call	Double-tap the <b>Answer/end</b> button

---

## 6.2 LIST OF VOICE GUIDANCE

---

CLICK TO LISTEN	WHAT YOU HEAR
	Connected
	Battery low
	Redialling
	Disconnected
	To connect your headset, go to the Bluetooth menu on your phone and select it from the list

# 7. SOFTWARE

## 7.1 JABRA ASSIST

---

Jabra Assist is a smartphone app that enables GPS tracking of the headset, pairing assistance, and headset battery status.

- Android download - Google Play
- iOS download - App Store

# 8. SUPPORT

## 8.1 FAQ

---

View the comprehensive FAQ on [Jabra.com/mini](http://Jabra.com/mini).

**Q Why do I hear crackling noises?**

A Bluetooth is a radio technology that is sensitive to objects between the headset and the connected device. Ensure the headset and the connected device are within range (up to 30 meters or 98 feet).

**Q What is the range of the headset?**

A The Jabra Mini supports the following maximum ranges: 30m/98ft.

**Q Why do I not hear anything?**

A You might need to increase the speaker volume, or ensure that the headset is connected to a device.

**Q I am having Bluetooth connection problems**

A Check your mobile device's Bluetooth menu and delete/forget the headset. Re-connect the headset to your Bluetooth device following the Bluetooth connection instructions.

## 8.2 HOW TO CARE FOR YOUR HEADSET

---

- Always store the headset with the power off and safely protected
- Avoid storage at extreme temperatures (above 35°C/95°F or below -20°C/-4°F). This can shorten battery life and may affect headset operation.
- Do not expose the headset to rain or other liquids



## 9. TECHNICAL SPECIFICATIONS

JABRA MINI HEADSET	SPECIFICATION
Weight:	under 10g
Dimensions:	L 47.1 mm x W 14.7 mm x H 9.9 mm
Microphones:	Omni-directional microphone
Speaker:	11 mm dynamic speaker
Operating range:	30m/98ft (phone dependent)
Bluetooth version:	4.0
Paired devices:	Up to 8, connected to two at the same time (MultiUse™)
Supported Bluetooth profiles:	A2DP(v1.2), Hands Free Profile (v1.6), Headset profile(v1.2)
Talk time:	Up to 9 hours
Standby time:	Up to 9 days
Operating temperature:	-10°C to 55°C (14°F to 131°F)
Storage temperature:	-20° C to 35° C (- 4 F to 95 F)
AC power supply	100-240 V, 50-60 Hz
Pairing passkey or PIN:	0000

