



JLAB®  
GO POP ANC  
|  
EARBUDS

**We love that you are rocking JLab!**  
**We take pride in our products and fully stand behind them.**



#### YOUR WARRANTY

All warranty claims are subject to JLab authorization and at our sole discretion. Retain your proof of purchase to ensure warranty coverage.



#### CONTACT US

Reach out to us at [support@jlab.com](mailto:support@jlab.com) or visit [jlab.com/contact](https://jlab.com/contact)

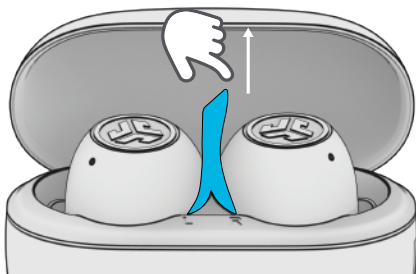
### REGISTER TODAY

[jlab.com/register](https://jlab.com/register)

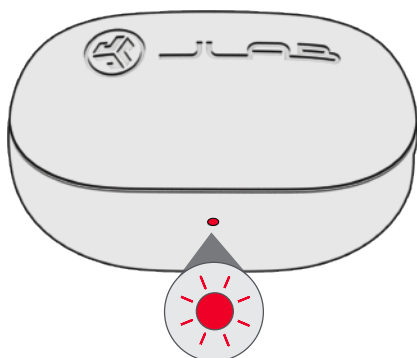
[Product updates](#) | [How-to tips](#)  
[FAQs & more](#)

## PAIR UP

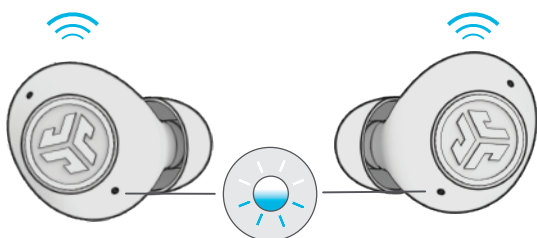
- 1** Remove tab and close door.



- 2** Red light on case indicates charge.  
Remove earbuds from case.

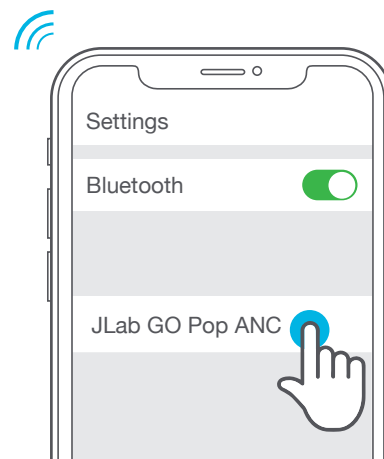
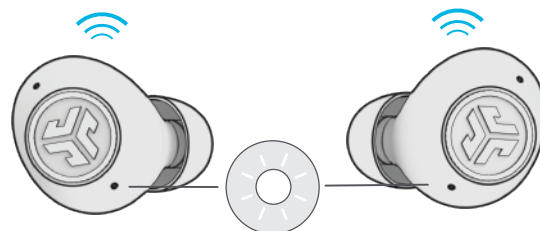


- 3** One earbud blinks blue/white = Ready to Pair

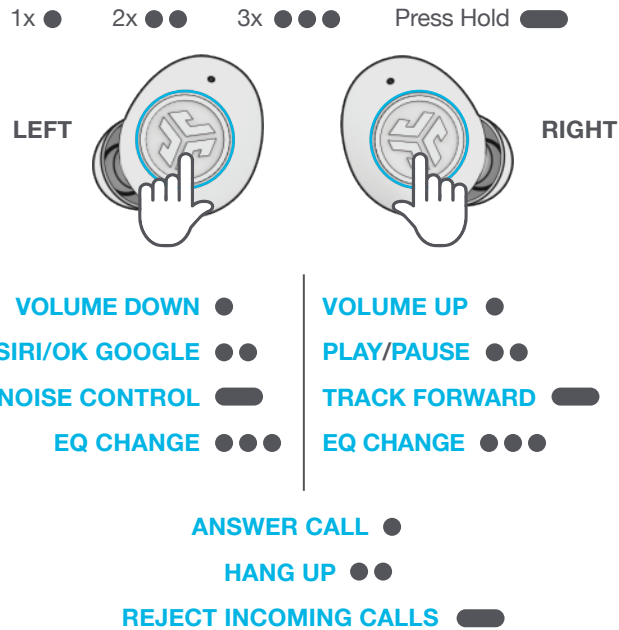


- 4** Select "JLab GO Pop ANC" in your device's Bluetooth settings to connect.

Voice prompt "Bluetooth connected" followed by lights off will indicate connection.



## GO AHEAD, PRESS THE BUTTON



## THE RIGHT SOUND FOR EVERY MOMENT

We get it, sound is personal. Choose your sound preferences from our EQ3 settings and customize your sound style to match exactly what you're doing.



### JLab SIGNATURE

JLab C3™ signature sound with amplified bass and vocals

#### BEST FOR

Best option for most music: Pop, rock, country, electronic and more



### BALANCED

Even sound with no additional enhancements

#### BEST FOR

Podcasts, Audiobooks  
Classical music



### BASS BOOST

Amplified bass and sub-bass

#### BEST FOR

Working out, sport and fitness, Hip hop, rap, electronic



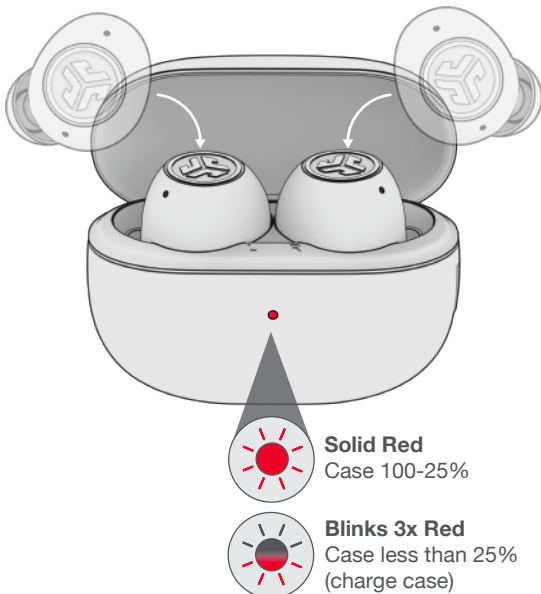
### "CUSTOM"

Personalize your EQ through the JLab App.

## GET CHARGED (EARBUDS)

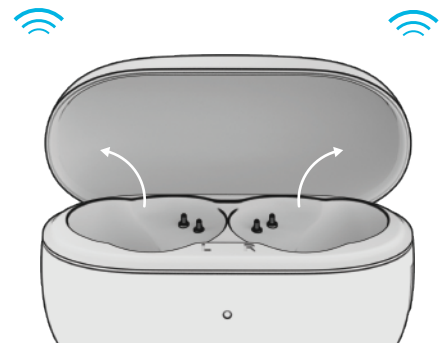
1

Earbuds will power off and start charging when placed in the case.



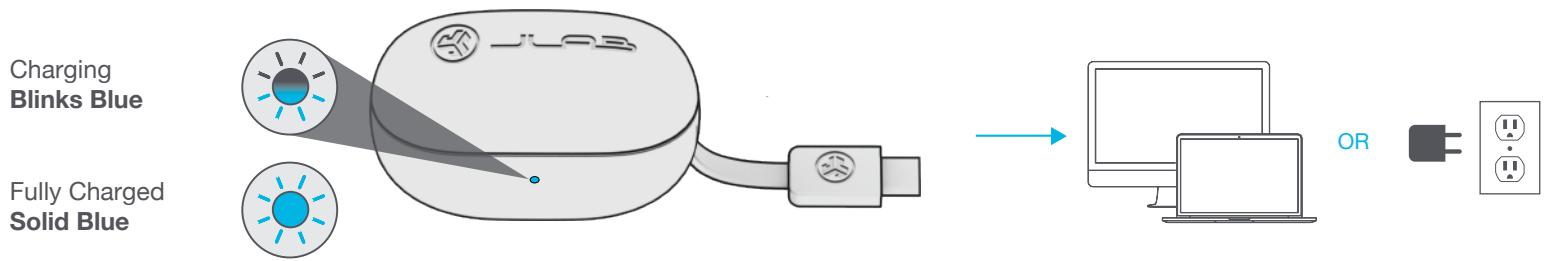
2

Earbuds will auto power on and connect when removed.

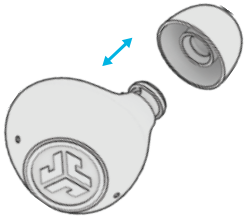


## GET CHARGED (CASE)

Connect the GO Pop ANC into a computer or USB-C 5V 1A (or less) output device.



## FIND YOUR FIT



Try all ear tips for best fit and proper seal.



Place the earbud in the ear canal and slightly rotate to adjust for best fit.

## DOWNLOAD THE APP

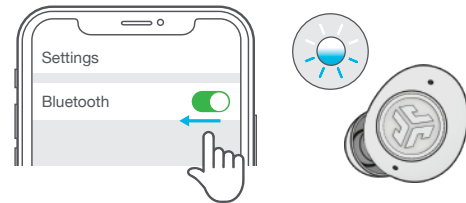
Customize GO Pop ANC features and update the latest software.

Download the **JLab App** in Apple/Google Play Store.



## MULTIPOINT

- 1 Once **FIRST** device is connected, turn off Bluetooth in device settings. GO Pop ANC will auto enter Bluetooth Pairing.



- 2 Enter your **SECOND** device Bluetooth settings and connect to GO Pop ANC.



- 3 Enter your **FIRST** device Bluetooth settings. Turn on Bluetooth and connect to GO Pop ANC.



[Shop products](#) | [Product alerts](#) | [Burn-in your headphones](#)

JLab Store + Burn-in Tool



[JLAB.COM](https://www.jlab.com)