



JLAB®
GO PODS
EARBUDS

We love that you are rocking JLab!
We take pride in our products and fully stand behind them.



YOUR WARRANTY

All warranty claims are subject to JLab authorization and at our sole discretion. Retain your proof of purchase to ensure warranty coverage.



CONTACT US

Reach out to us at support@jlab.com or visit jlab.com/contact

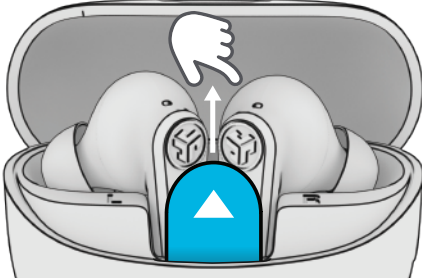
REGISTER TODAY

jlab.com/register

[Product updates](#) | [How-to tips](#)
[FAQs & more](#)

PAIR UP

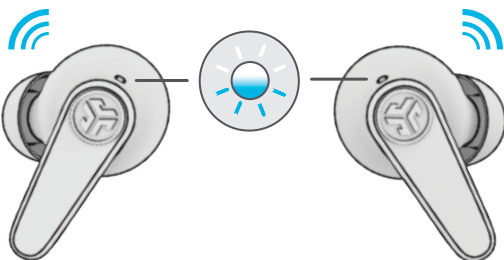
- 1** Remove tab and close door.



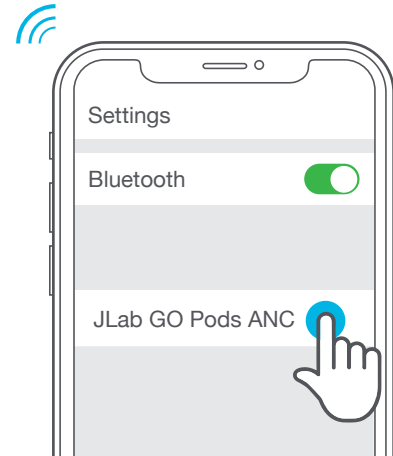
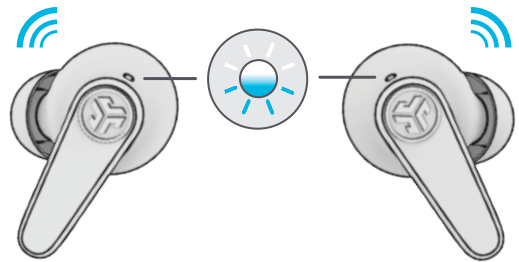
- 2** Light on case indicates charge.
Remove earbuds from case.



- 3** One earbud blinks blue/white = Ready to Pair

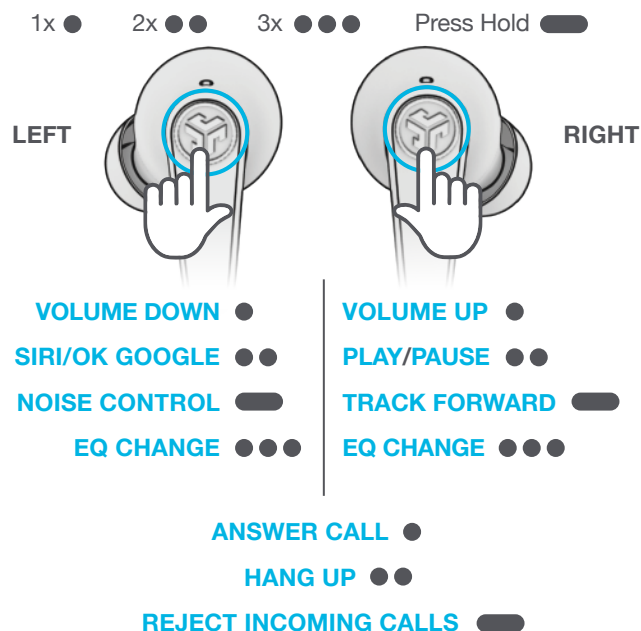


- 4** Select JLab GO Pods ANC in your Bluetooth settings to connect.



Voice prompt "Bluetooth connected" followed by lights off will indicate connection.

GO AHEAD, PRESS THE BUTTON



THE RIGHT SOUND FOR EVERY MOMENT

We get it, sound is personal. Choose your sound preferences from our EQ4 settings and customize your sound style to match exactly what you're doing.



JLab SIGNATURE
JLab C3™ signature sound with amplified bass and vocals

BEST FOR
Best option for most music: Pop, rock, country, electronic and more



BALANCED
Even sound with no additional enhancements

BEST FOR
Podcasts, Audiobooks
Classical music



BASS BOOST
Amplified bass and sub-bass

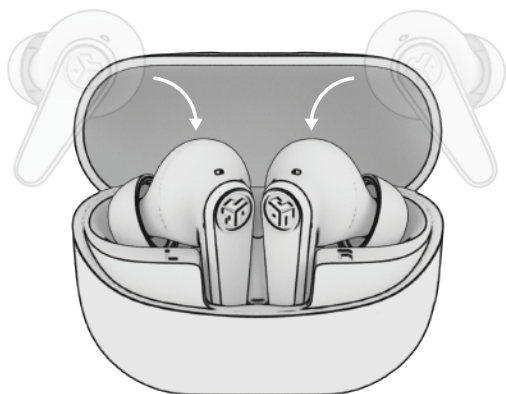
BEST FOR
Working out, sport and fitness, Hip hop, rap, electronic



"CUSTOM"
Personalize your EQ through the JLab App.

GET CHARGED (EARBUDS)

- 1** Earbuds will power off and start charging when placed in the case.

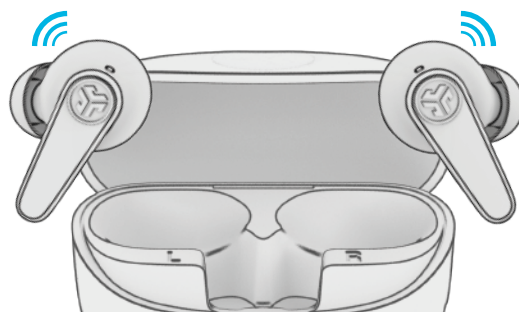


Solid Green
Case 100-25%



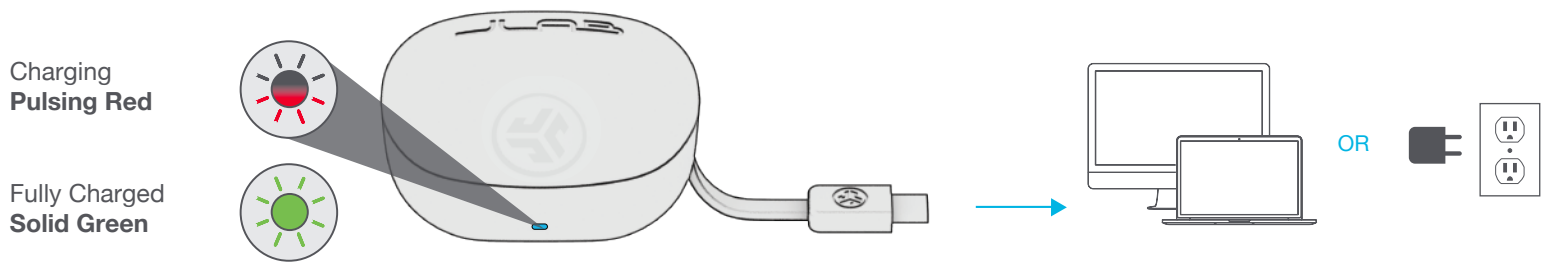
Blinks 3x Red
Case less than 25%
(charge case)

- 2** Earbuds will auto power on and connect when removed.

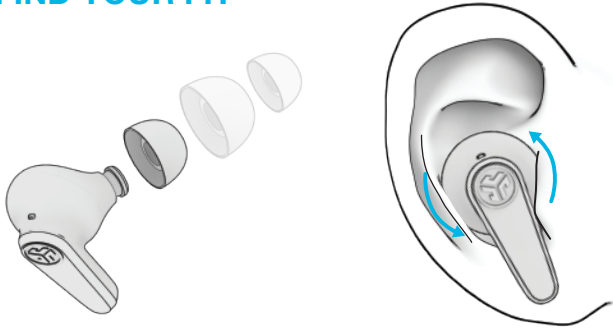


GET CHARGED (CASE)

Connect the GO Pods ANC to a computer or USB-C output device.



FIND YOUR FIT



DOWNLOAD THE APP

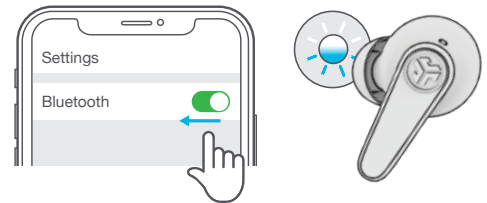
Customize GO Pods ANC features and update the latest software.

Download the **JLab App** in Apple/Google Play Store.



MULTIPOINT

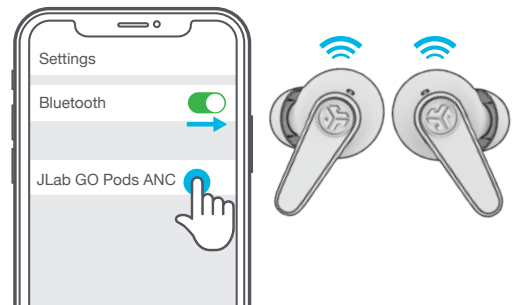
- 1 Once **FIRST** device is connected, turn off Bluetooth in device settings. Earbuds will auto enter Bluetooth Pairing.



- 2 Enter your **SECOND** device Bluetooth settings and connect to GO Pods ANC.



- 3 Enter your **FIRST** device Bluetooth settings. Turn on Bluetooth and connect GO Pods ANC.



[Shop products](#) | [Product alerts](#) | [Burn-in your headphones](#)

JLab Store + Burn-in Tool



[JLAB.COM](https://www.jlab.com)